



CALIFORNIA  
High-Speed Rail Authority

# HSR Interpretive Exhibits

Dr. Amanda R. Harvey

HSR Authority Cultural Resources Representative

July 28, 2025



CALIFORNIA  
High-Speed Rail Authority

# Belmont Interpretive Exhibit Lighting

# Belmont IE Lighting Revisions

- Change ground lighting to Autobahn LED Type V light, as requested by COF Public Works
  - » No impact to funding source or point-of-service with PG&E needed
- Exhibit design prepared in consultation with the HPC in 2019
- No changes to 2020 design approved by HPC, COF, Authority, and SHPO aside from lighting scheme





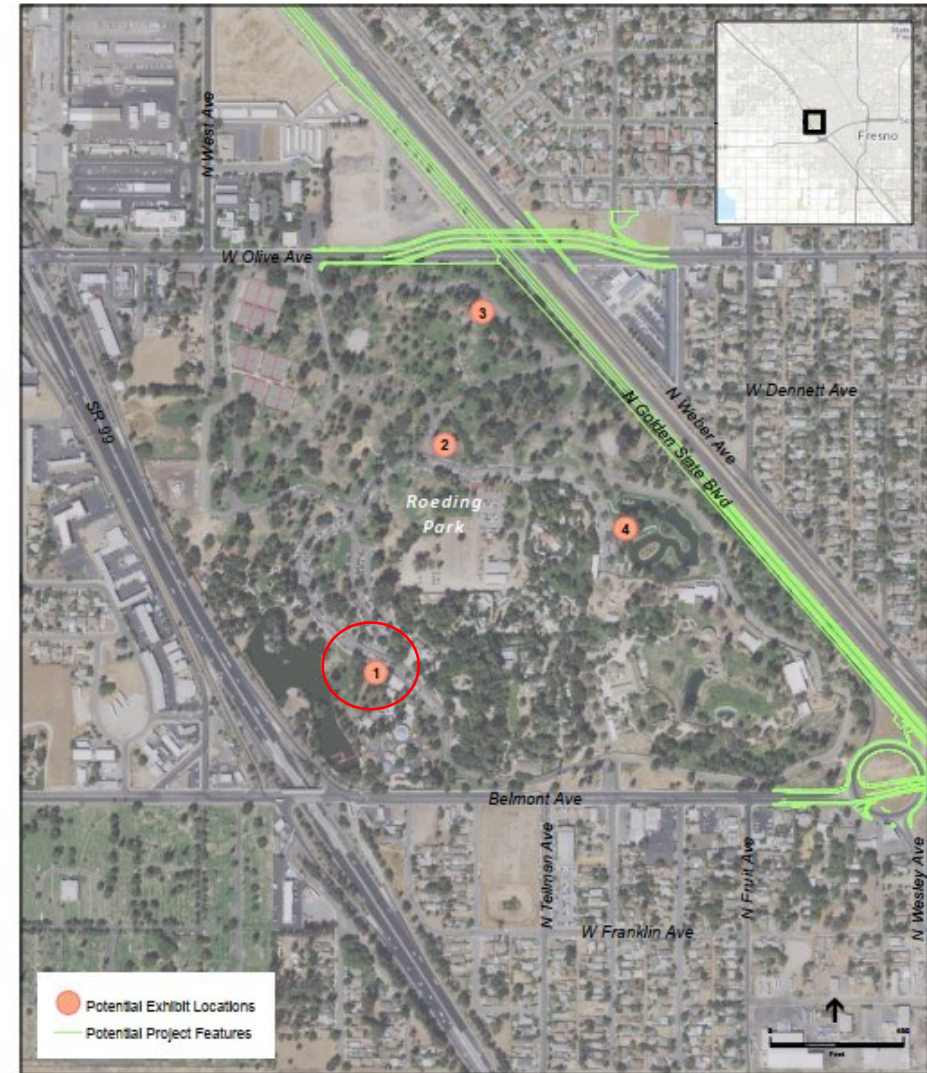


**CALIFORNIA**  
High-Speed Rail Authority

# Roeding Park Interpretive Exhibit

# Roeding Park IE Location

- Requested close proximity to Lake Washington, Storyland, and the current zoo entrance
- November 2022 on-site meeting and picked location #1



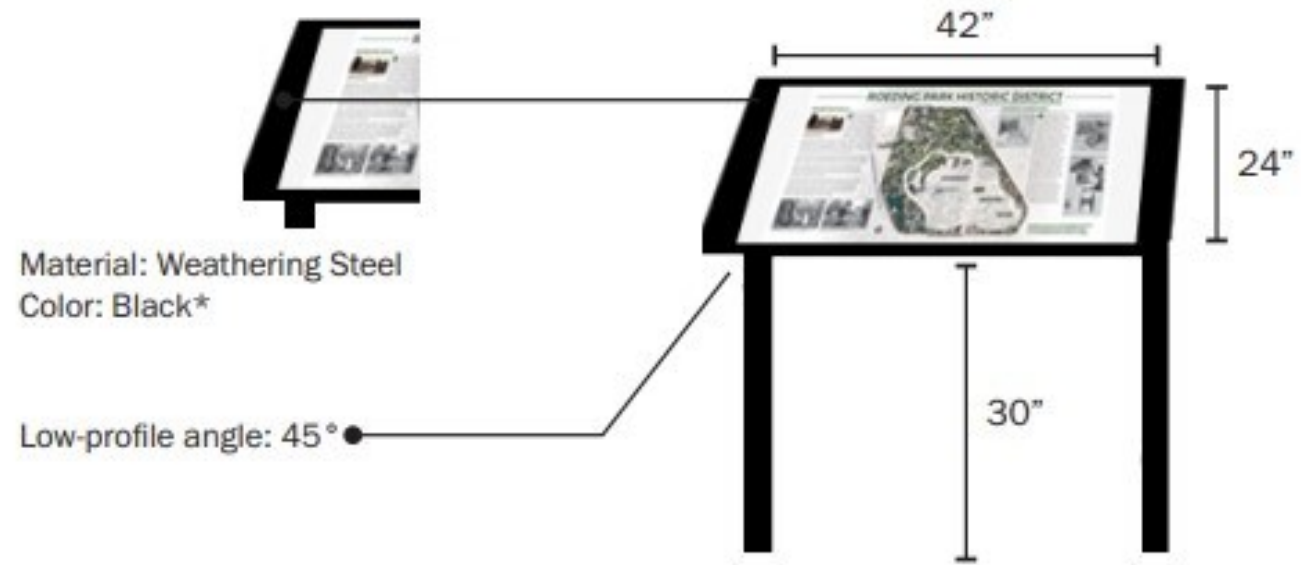
SOURCE: NAIP, 2018; CHSRA, 2022; TP2P, 2022; ESA, 2022

California High-Speed Rail Project - 120462.00

**Figure 1**  
Potential Approximate  
Locations of Exhibit

# Roeding Park IE Design and Materials

- Low profile orientation
- Weathering Steel base
  - » Black
  - » Or color of sound wall
- ADA measurements





# Roeding Park IE Narrative Text and Imagery

- Discuss the history and NRHP significance
- Identify the extant contributing resources
- Have a QR code for ADA accessibility
  - » Maintained by COF





# ROEDING PARK HISTORIC DISTRICT

Produced as part of the mitigation efforts of California High-Speed Rail

## RECREATION FOR ALL



Roeding Park Pergola, 1925. Source: Fresno County Library

Between 1903 and 1921, Frederick and Marianne Roeding donated and sold a total of 154 acres to the City of Fresno to develop as a public regional park that would be a destination for leisure recreation. Their son George, a successful horticulturist who managed the family's 650-acre experimental orchard east of Fresno, was also a city park commissioner, and established the park as an arboretum, donating numerous trees and shrubs from their nursery. He engaged the City's head gardener, Johannes Reimers, to develop a master plan for the park using a naturalistic, rambling design with water features, picnic areas, and meandering roads.

A zoo with two bears and 50 birds opened in 1908. Animals were added each year, and the zoo became the park's main attraction by the mid-20th century. In 1990, it was renamed after the zoo's first director, Paul Chaffee.

In 1912, an electric streetcar line was extended through Roeding Park, connecting it to downtown Fresno via Olive Avenue and Fulton Street. This was an important milestone in establishing the park as a destination accessible by all economic classes.

Other attractions built in Roeding Park include a series of man-made ponds (c. 1907, demolished), a streetcar shelter (1912), a pergola (1912), concrete benches (1913), tennis courts (c. 1913 and c. 1935), a bandstand (1923), a Japanese garden (1930, demolished), the man-made Lake Washington (1936), and several memorials and monuments. Rotary Playland and Storyland opened to the public in 1955 and 1962.



Roeding Park, ca 1910. Source: Fresno County Library



Roeding Park, 1920. Source: Fresno County Library

QR  
Code



## HISTORICAL SIGNIFICANCE



The Roeding Park Historic District is eligible for listing in the National Register of Historic Places, California Register of Historical Resources, and the City of Fresno Local Register of Historic Resources. It is an important regional example of an early 20th century municipal park style that was part of a national trend away from early picturesque pleasure grounds toward recreation-focused public spaces. Roeding Park's curved paths, expansive lawns, groves of trees, picnic areas, and landscape architecture elements such as pergolas, and the incorporation of facilities for recreational and cultural activities such as tennis, boating, outdoor concerts, and folk dancing are all characteristics of this type of early 20th century American park.

The park features constructed during the historic district's period of significance from 1903 (when construction at the park began) to 1962 (when Rotary Storyland was completed) contribute to the NRHP-eligible historic district.



Contributing resources to the Roeding Park Historic District are called out on the map above, while non-contributing elements are shown as opaque.





CALIFORNIA  
High-Speed Rail Authority

Belmont Lanterns



# Belmont Lanterns

- Discovered June 9<sup>th</sup> in room in the Belmont Underpass
- Large, approximately 2ft wide by 4ft tall
- Most painted red and green
- Unable to identify their use and looking for any clues







CALIFORNIA  
High-Speed Rail Authority

# Questions and Comments on the Exhibits and Lanterns