

Tower District Specific Plan Update

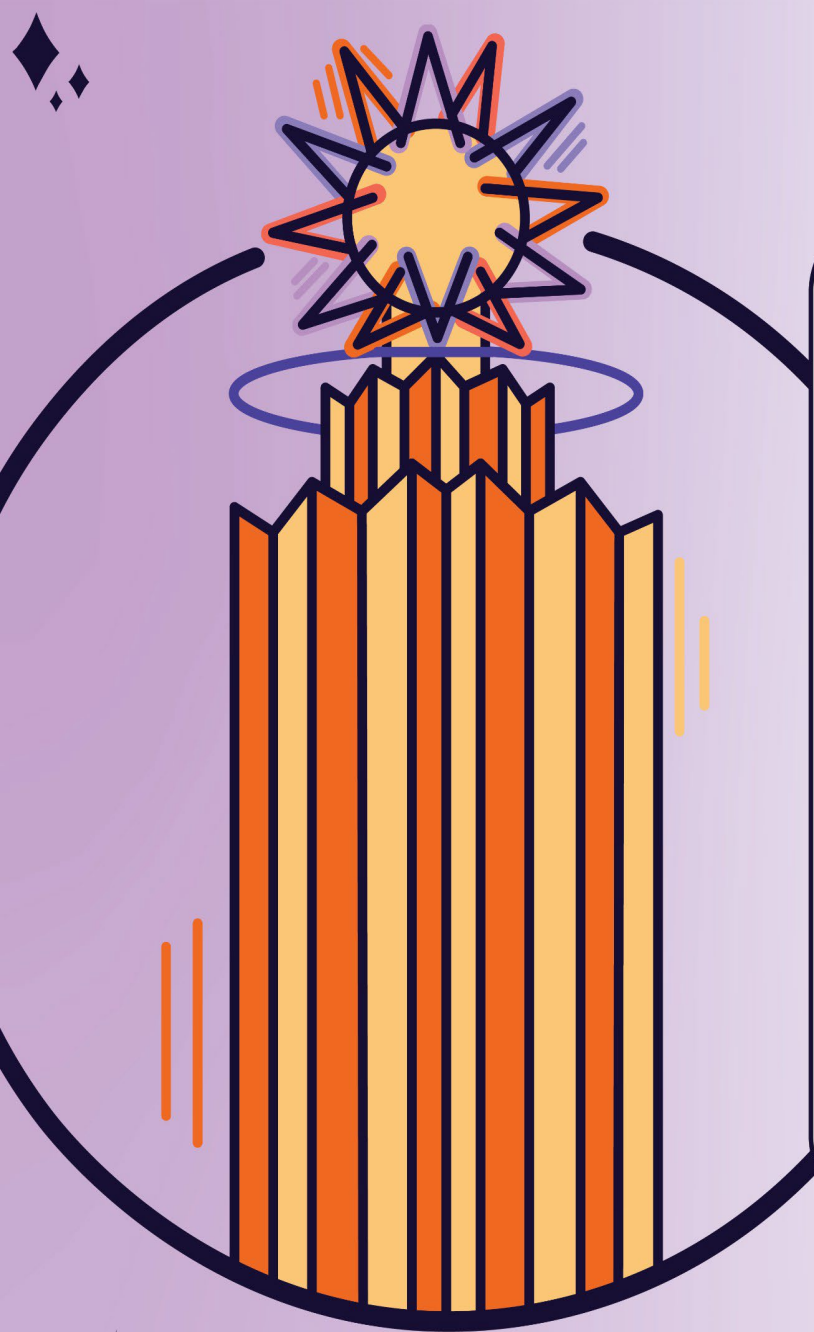
Active Transportation Advisory Committee Meeting
Tuesday, October 23, 2024

www.fresno.gov/tdsp



Presentation Outline

- I. What is a Specific Plan?
- II. Tower District Specific Plan
- III. Outreach & Engagement
- IV. Draft Plan Update
- V. Timeline
- VI. Questions & Comments



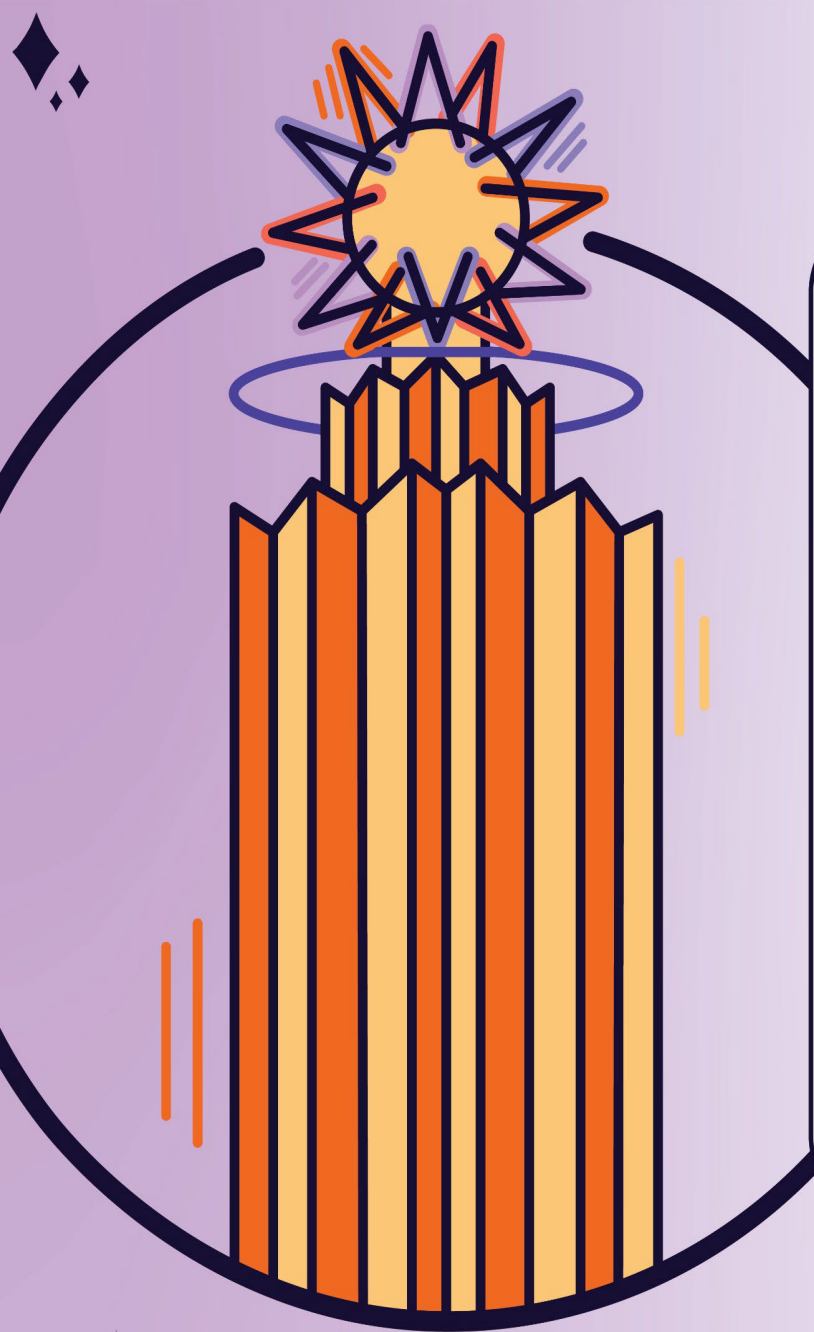
I. What is a Specific Plan?

What is a Specific Plan?

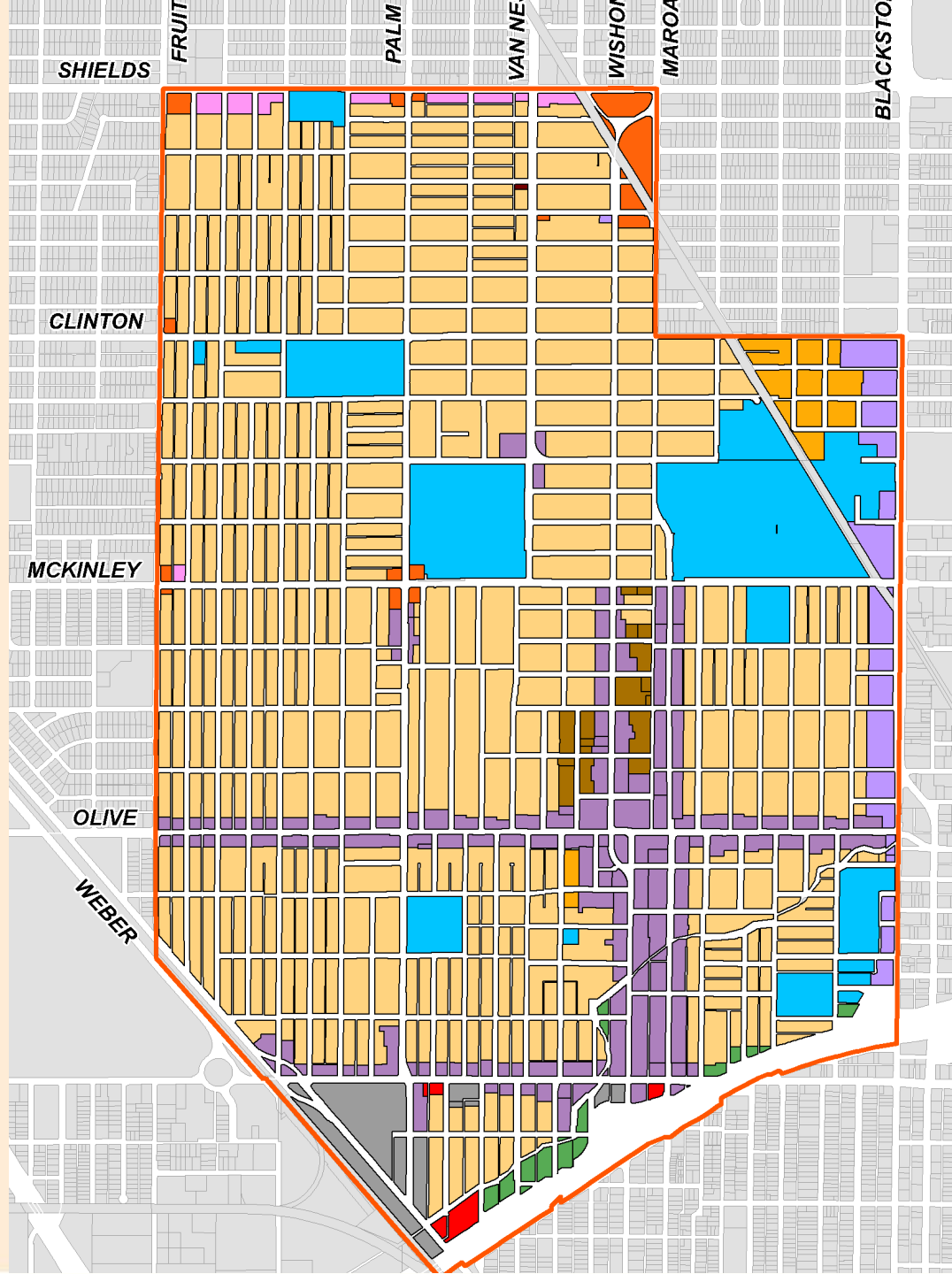
A specific plan is a comprehensive long-range planning tool used to guide future development within a defined area.

- Link between the General Plan and Plan Areas
- Assess community needs at a nearer scale
- Focused CEQA review to streamline projects
- Tool for partnerships, strategies, and funding

State requirements: GC § 65451 (mini-General Plan)



II. Tower District Specific Plan





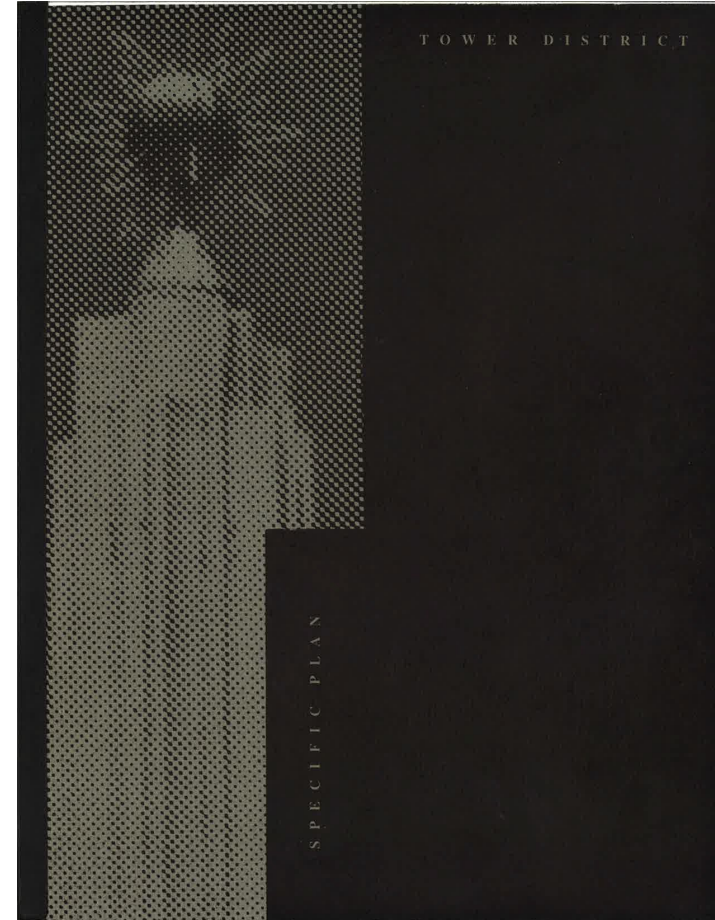
www.fresno.gov/tdsp

Introduction to the Plan

The Tower District Specific Plan was adopted in 1991. Since its creation, Tower has changed in many ways. The purpose of this Specific Plan Update is to recast a vision and create clear implementation measures to allow the vision to become a reality. Check out our YouTube video to learn more!

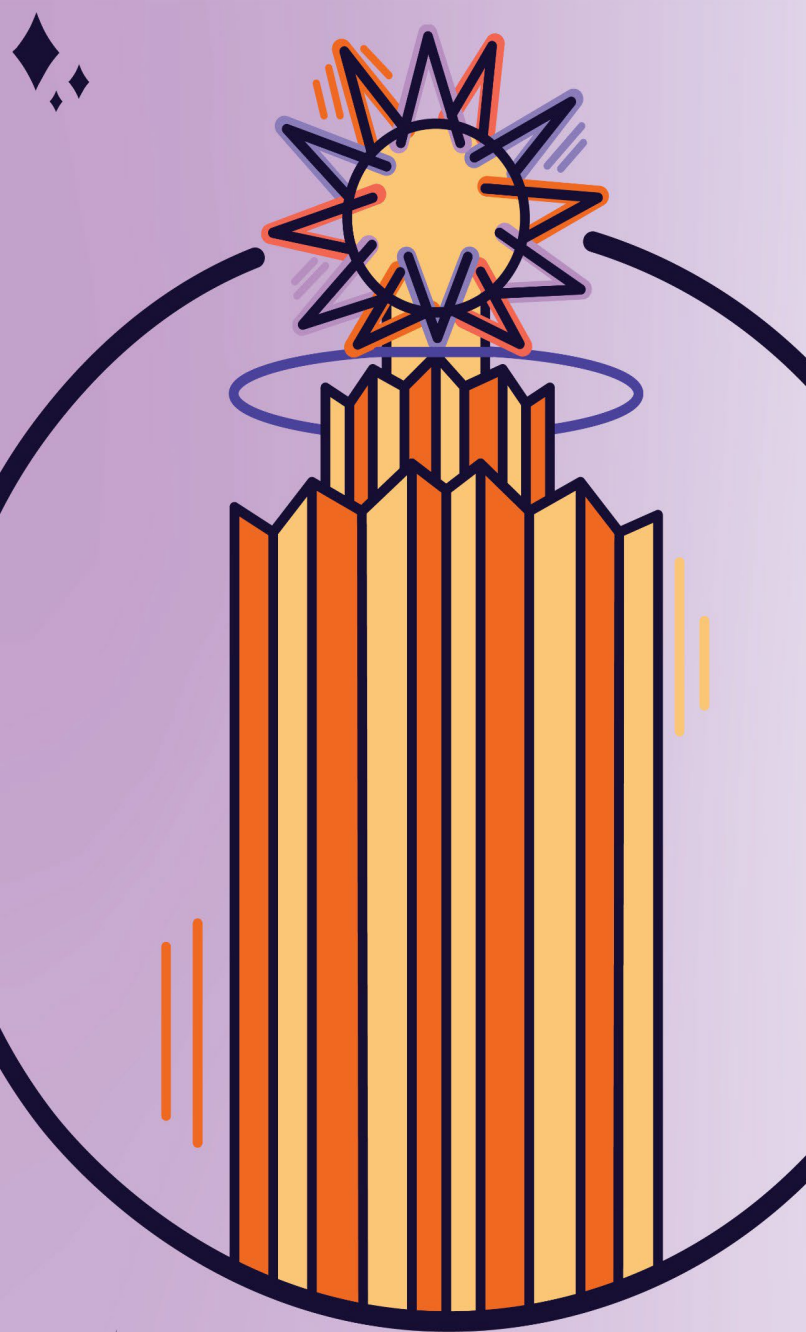
1991

- Historic Preservation
- Land Use
- Open Space
- Circulation
- Infrastructure
- Implementation



Key Circulation Issues From 1991

- Proposed Route 180: barrier between Tower and Downtown, blight, highway commercial uses
- Redesignating two-way traffic on one-ways.
- Parking for cars and bikes.
- No widening Olive Ave.
- Reduce the dominant role of the automobile.

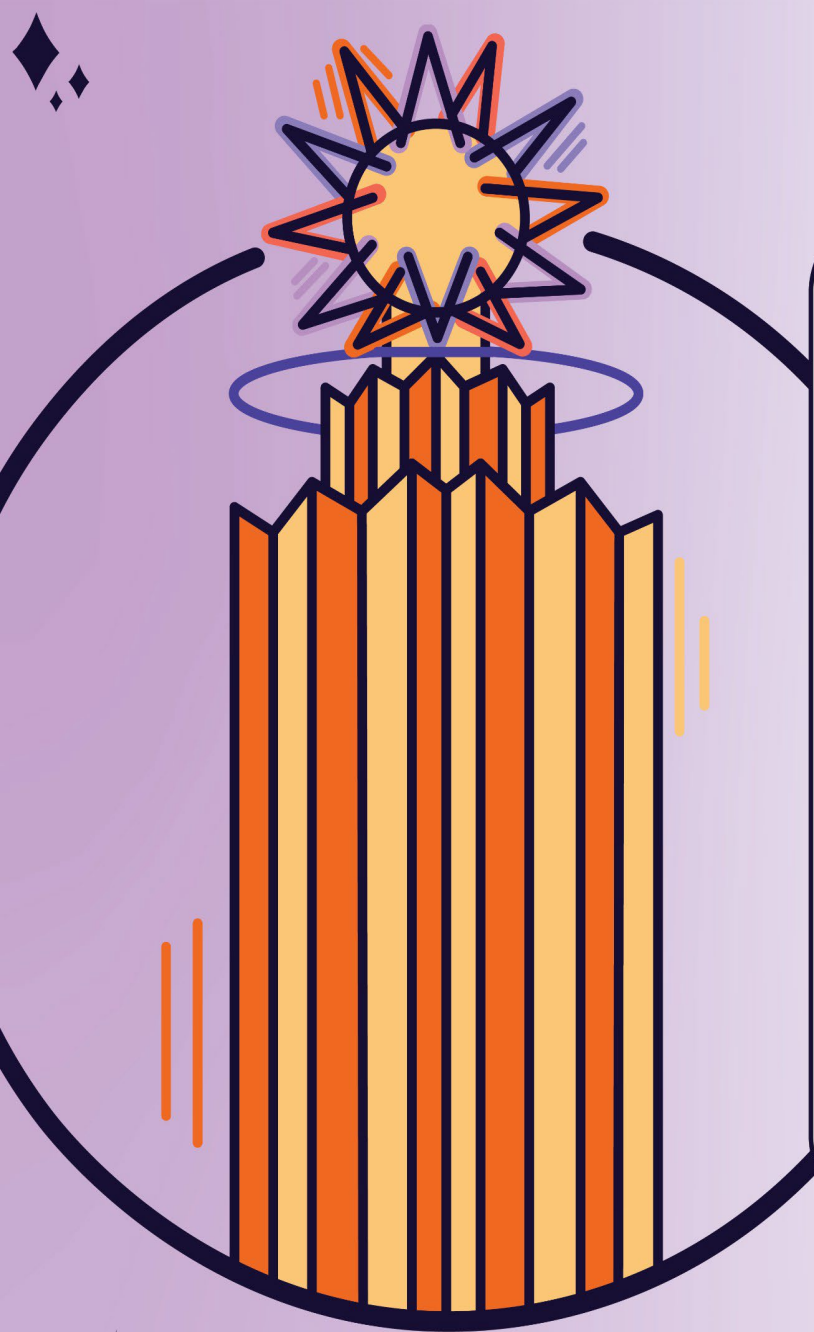


III. Outreach and Engagement

OUTREACH ACTIVITIES

- Implementation Committee meetings
- Subcommittee meetings
- Public outreach video
- First-in-kind standalone City website for Plan update
- Public survey
- Two public workshops
- Canvassing
- Mailers/letters
- Pop-up events
- Tower Rocks





IV. Draft Plan Update

Draft Specific Plan Public Comment Period

**REVIEW
AND
COMMENT**

The Draft Tower District Specific Plan is **NOW** available for public comment from



**July 12th, 2024
through
August 12th, 2024**



To view the Draft Specific Plan scan the QR Code OR visit the link below:
www.fresno.gov/tdsp



To submit your comments, please visit:

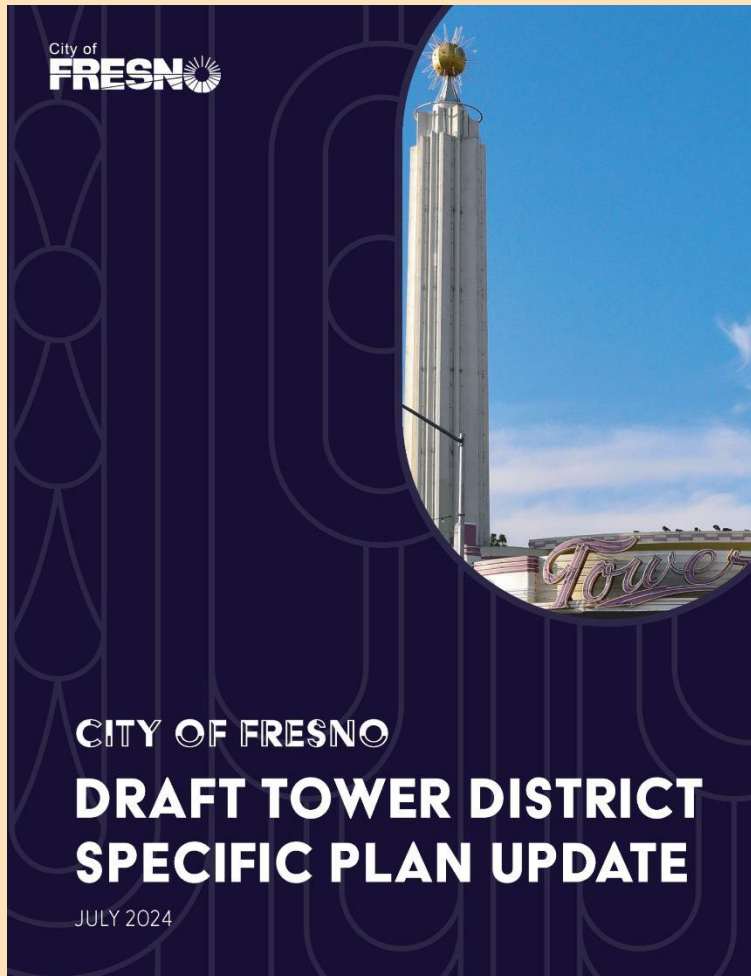
<https://tinyurl.com/TDSPComments>

or contact

Adrienne Asadoorian-Gilbert:
Adrienne.Asadoorian@fresno.gov
or (559) 621-8339



Draft Specific Plan Guiding Principles



- I Enhance the **livability and social diversity** of the Tower District's residential neighborhoods, and create housing opportunities that make the District inclusive and welcoming.
- II Nurture the mutually supportive relationship between the Tower District's residential neighborhoods and **vibrant commercial areas**.
- III Conserve and revitalize the Tower District's **historic resources**.
- IV Shape the **character of new development** to complement the Tower District's character as a walkable place not dominated by the automobile.
- V Provide **effective transportation access** for pedestrians, bicyclists, motorists, and transit users, and emphasize the importance of pedestrian-friendly environments.
- VI Increase **opportunities for recreation** within walking distance of Tower District residents.
- VII Promote **environmental sustainability and climate resilience**.

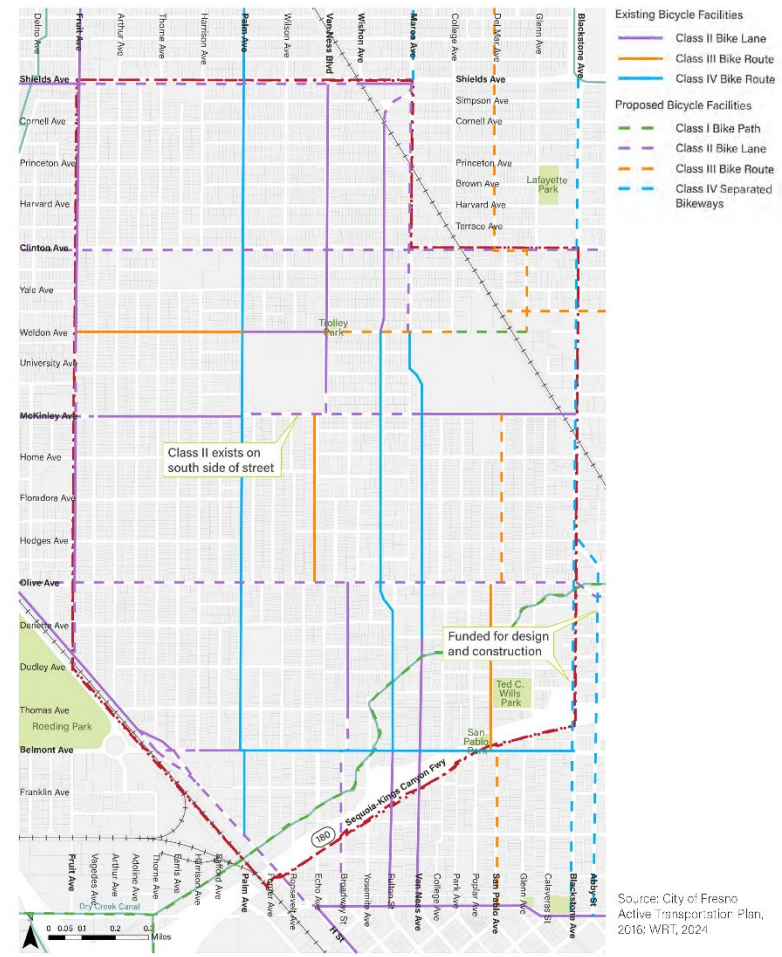


Chapter 5 - Circulation

FIGURE 5.6 | Transit Routes

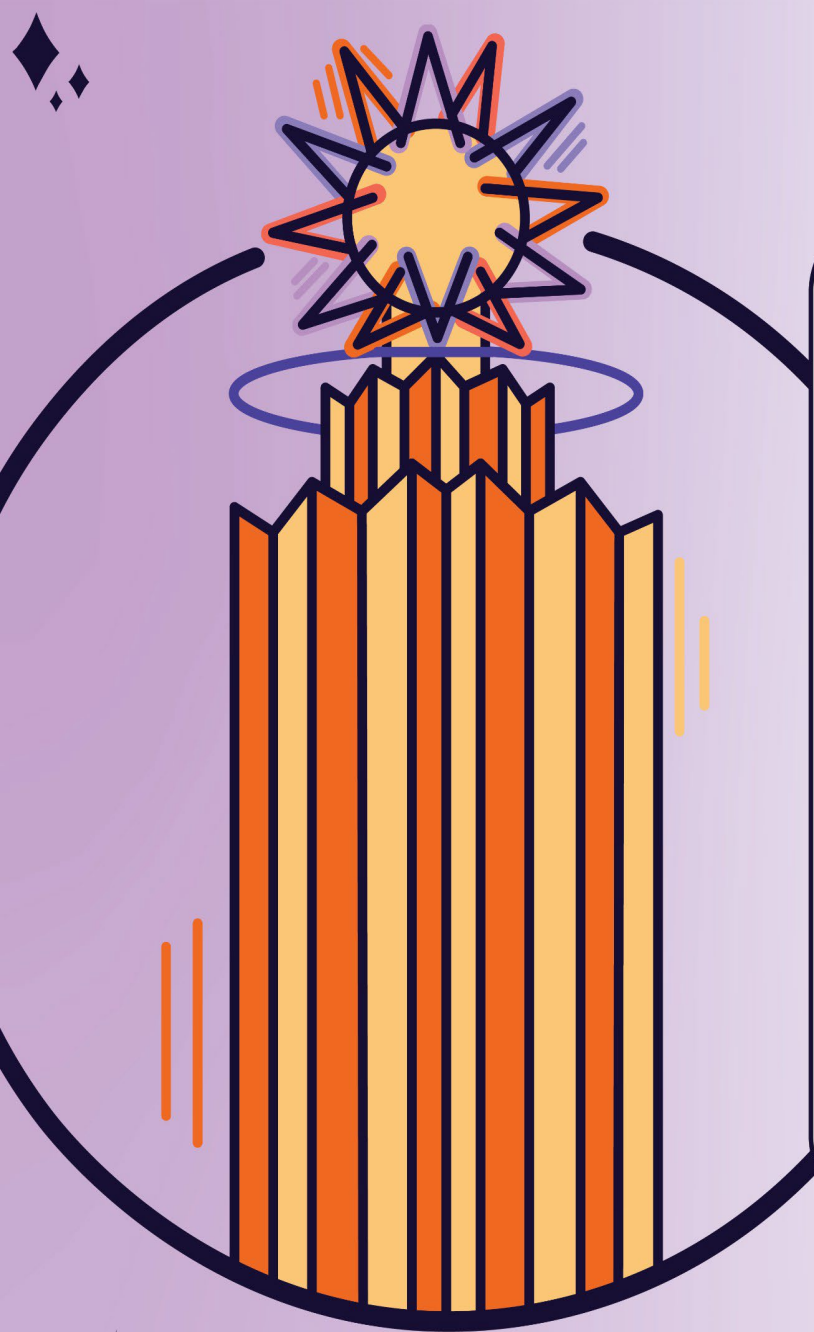


FIGURE 5.5 | Existing and Planned Bike Lanes



Source: City of Fresno Active Transportation Plan, 2016; WRT, 2024.





V. Timeline

Timeline and Next Steps

City Council Initiation: November 7, 2024

- Allows environmental review process to begin to analyze potential impacts
- Once environmental analysis is complete, the Plan update will be presented to the City Council for final recommendation

Environmental Analysis

- Environmental analysis: Summer 2024 – Fall 2025 (assuming an Environmental Impact Report)



VI. Questions & Comments

