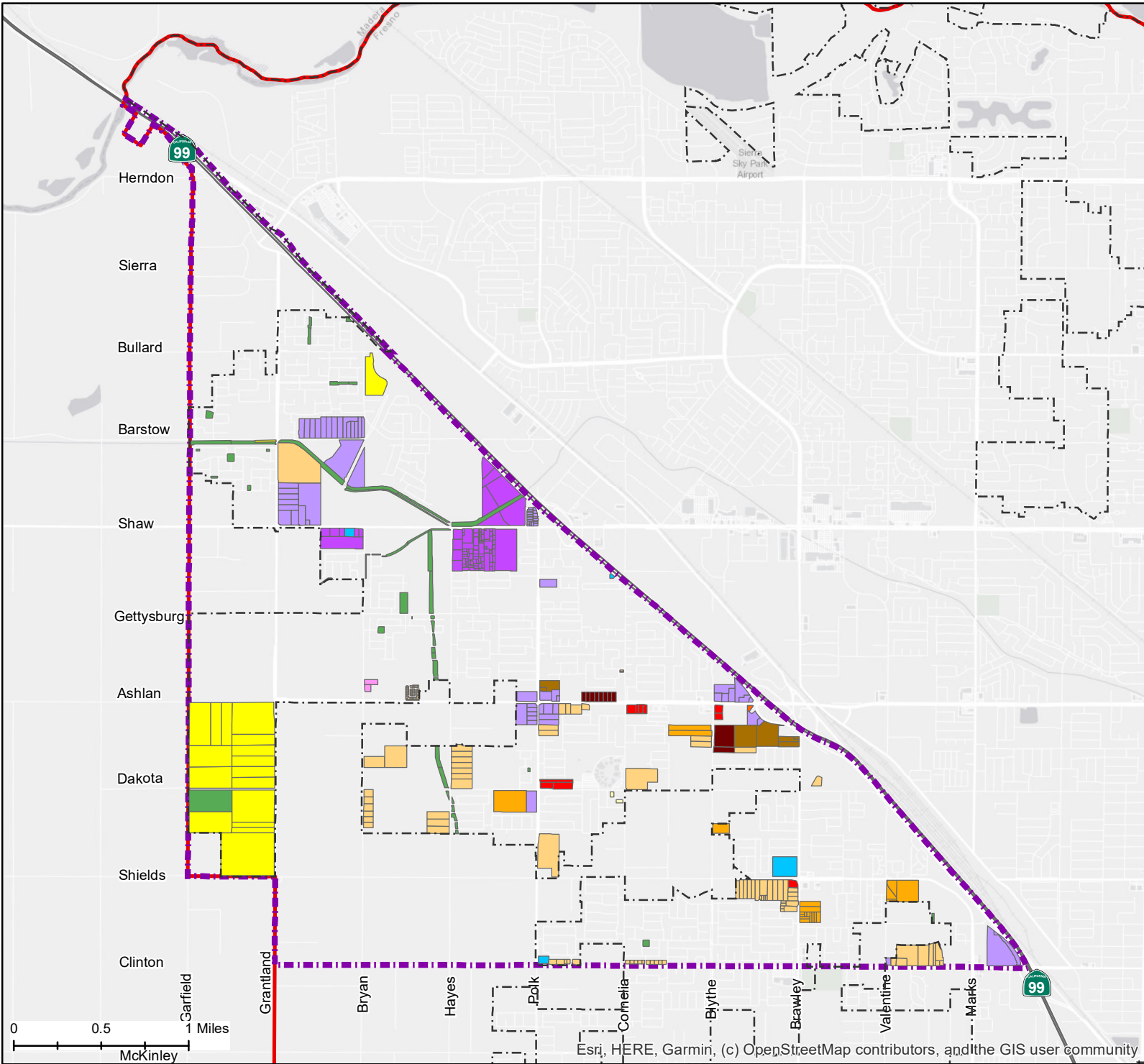
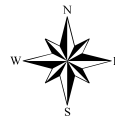


Exhibit E
Plan Amendment P22-01353
West Area Neighborhoods Specific Plan
Proposed Changes to the Zoning Map



Proposed Changes to the Zoning Map

Planning and Development Department



Proposed Zoning Changes

RESIDENTIAL

- RS-3 - Residential Single-Family, Low Density
- RS-4 - Residential Single-Family, Medium Low Density
- RS-5 - Residential Single-Family, Medium Density
- RM-1 - Residential Multi-Family, Medium High Density
- RM-2 - Residential Multi-Family, Urban Neighborhood
- RM-3 - Residential Multi-Family, High Density

COMMERCIAL

- CC - Commercial Community
- CG - Commercial General

MIXED USE

- NMX - Neighborhood Mixed Use
- CMX - Corridor/Center Mixed Use

EMPLOYMENT

- O - Office

OPEN SPACE

- OS - Open Space
- PR - Park and Recreation

PUBLIC FACILITY

- PI - Public and Institutional

- West Area Neighborhoods Specific Plan
- City Limits
- Sphere of Influence

Proposes to rezone 958.4 acres of zoning districts.

Disclaimer:
This map is believed to be an accurate representation of the City of Fresno GIS data, however we make no warranties either expressed or implied for correctness of this data.