



SOUTH CENTRAL FRESNO AB 617 COMMUNITY TRUCK REROUTE STUDY AND HEALTH ASSESSMENT

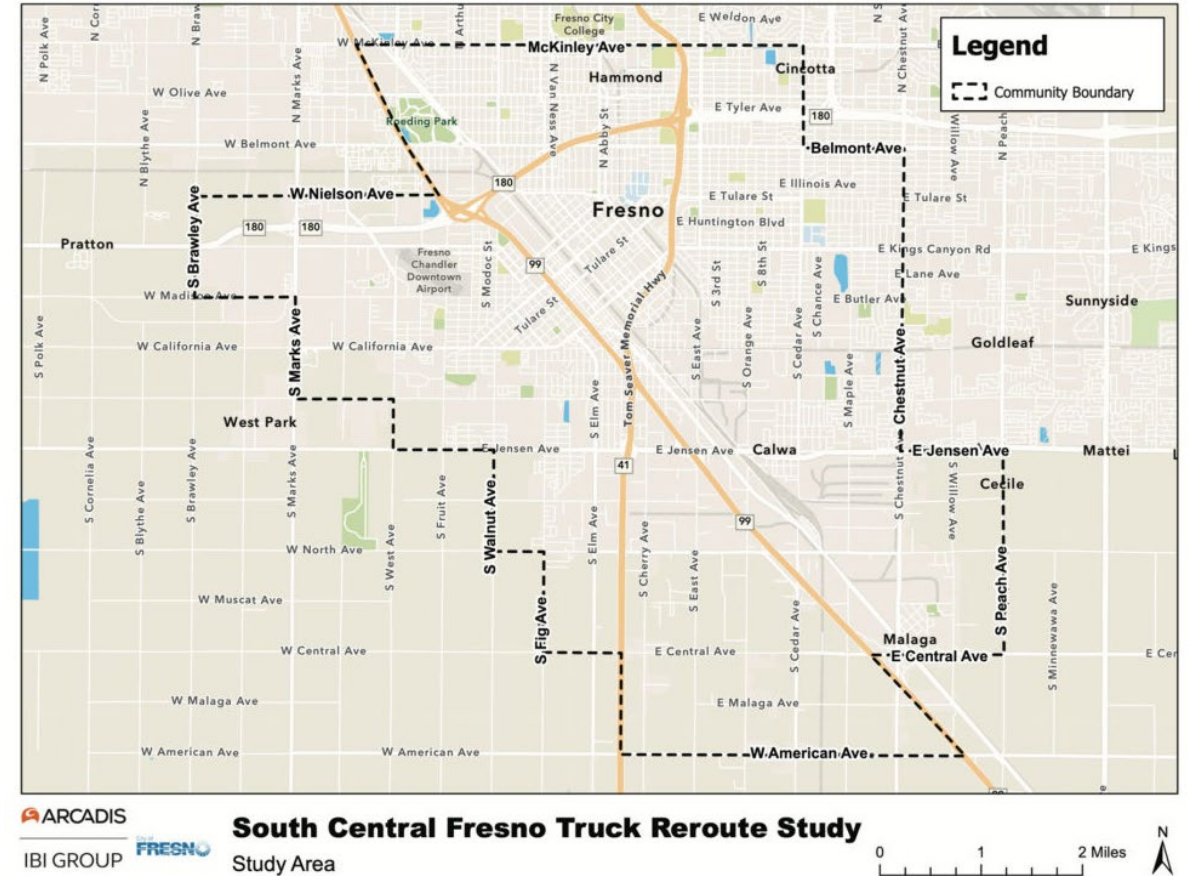
TOWER DISTRICT SPECIFIC PLAN COMMITTEE MEETING

PRESENTED BY THE CITY OF FRESNO

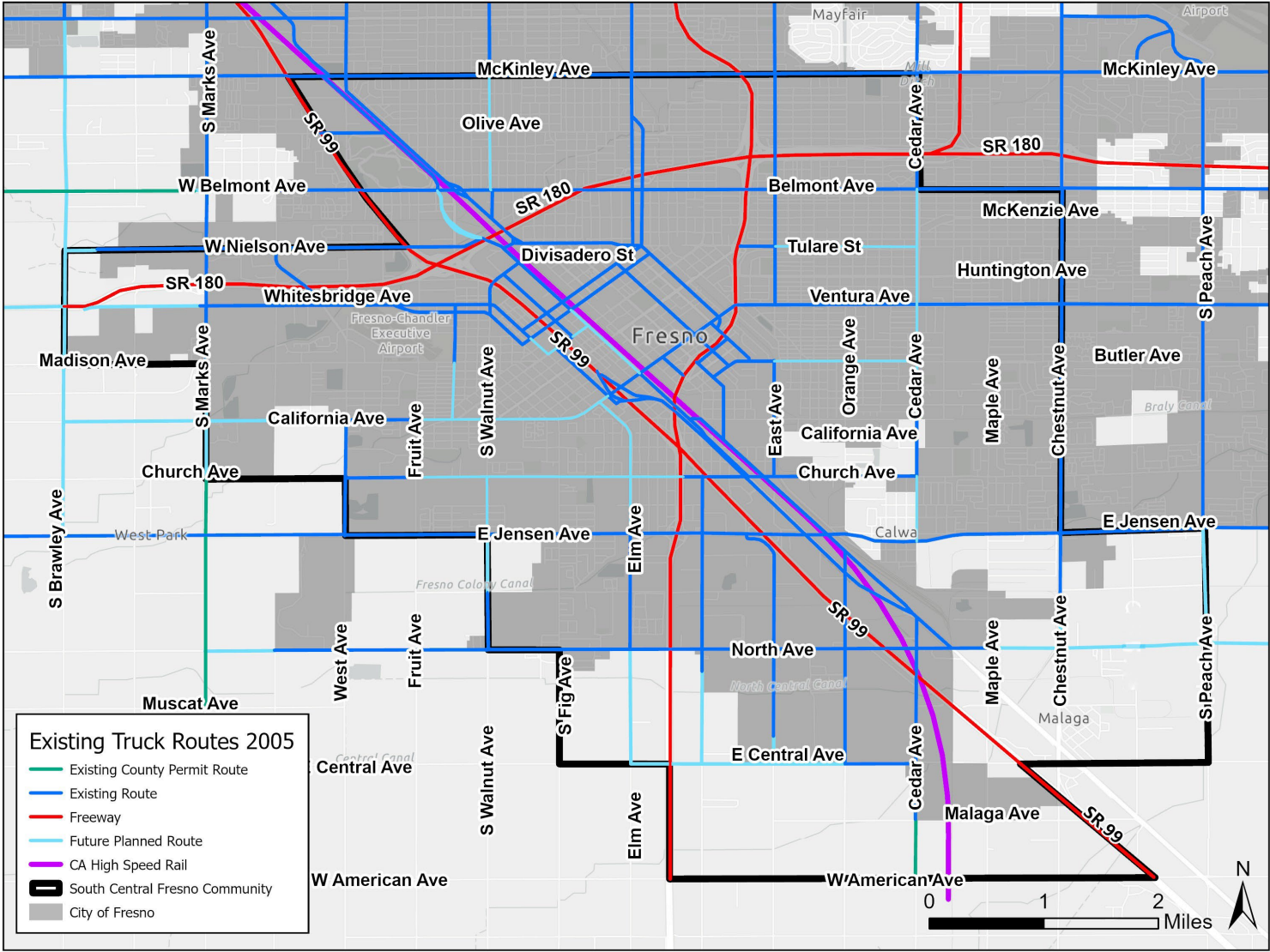
APRIL 30, 2024

Why were these studies prepared?

- To decrease truck impacts and improve community safety in South Central Fresno while maintaining or increasing, goods movement and productivity.
- Assess the extent to which air pollution exposures influence the risk of common health outcomes.
- Explore residents health experience that are related to air pollution in the region.



Existing
Truck
Routes

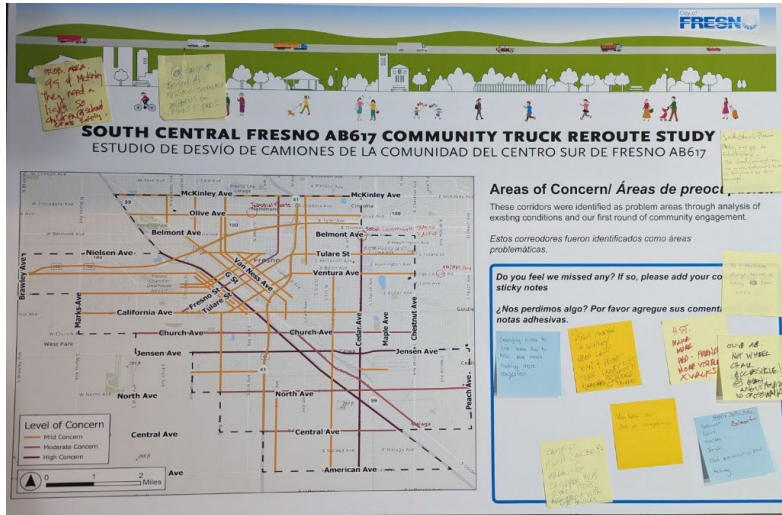


Community Outreach

- **February 2023: Committee Recruitment**
- **March 2023: One-Hour Stakeholder Interviews (Virtual and In-Person)**
 - 7 persons interviewed
- **March 2023, December 2023, January 2024: Surveys**
- **September & October 2023: Pop-Up Events – Fiestas Patrias & Trunk or Treat at Maxie L. Parks Community Center**
 - 600+ total in-person interactions at two events
- **January 2024: Malaga Recreation Center**
 - About 30 attendees
- **Promotions**
 - Flyers, e-blasts, and social media messages for all outreach activities. Project website updated.

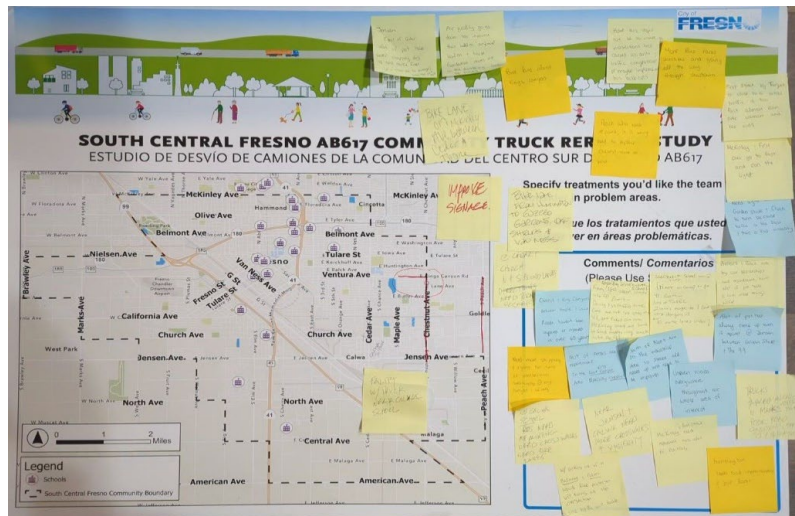


Existing Conditions Phase

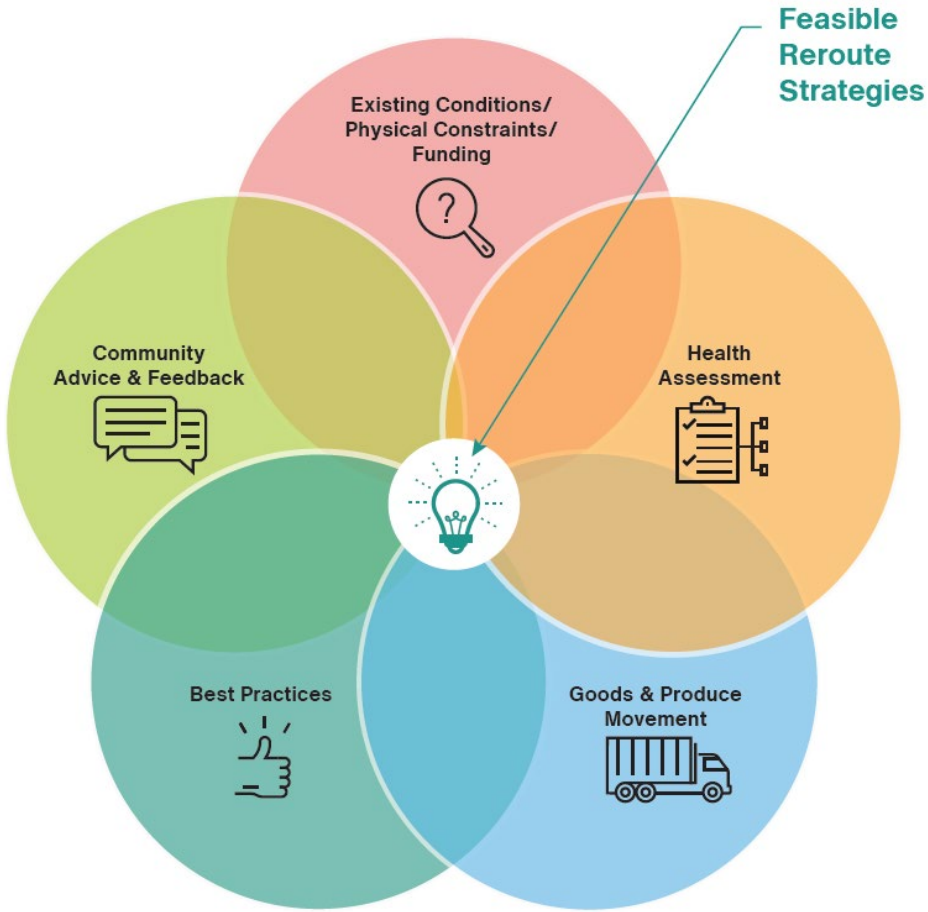


Feedback Themes:

- **Pedestrian and bicyclist safety issues**
 - Missing sidewalks and crosswalks near important destinations
 - Not enough separation between trucks and other users
 - Lack of bike lanes
 - Queueing at freeway on-ramps cause unsafe conditions
- **Truck behavior issues**
 - Trucks drive at unsafe speeds and don't observe signs, especially near schools
 - Idling due to unsynchronized traffic signals
- **Roadway infrastructure issues**
 - Damaged street surfaces, potholes



Key Considerations for Feasible Reroute Strategies



Strategy Toolkit

New Sidewalks



Close gaps in the existing sidewalk network

Roadway Maintenance



Remove potholes and cracks that reduces truck maintenance and GHG emissions

Traffic Signalization Improvement



Improve intersections to enhance safety and flow of traffic

New & Improved Crosswalks



Create new crosswalks and restripe existing crosswalks to increase visibility

Traffic Calming



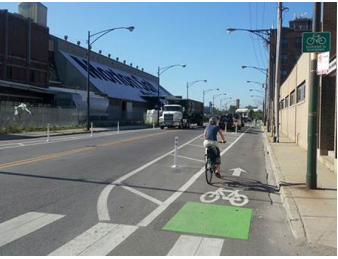
Implement measures to reduce truck speeds or divert trucks

Roadway Reconfiguration



Accommodate alternative modes or alter truck movements

New Bike Lanes



Dedicated travel lanes to enhance bicycle accessibility and safety

Truck-Focused Signage



Informs truck drivers on truck routes and regulated areas

Truck Regulated Area



Creates a boundary around sensitive receptors that can be used to limit truck bypass

Non-Infrastructure Strategies

Education & Outreach Programming

- Ensures drivers are aware of routing changes and optimizes new routes

Truck Fuel-type, Emissions, and Idling Standards

- Allows trucks to operate efficiently and produce fewer emissions

Truck-specific GPS Administration

- Provides info for critical route restrictions avoiding sensitive receptors

Time-of-Day Restrictions

- Minimizes peak time congestion and improves safety

Enforcement

- Helps maintain order and safety on roadways and deters violations





HEALTH ASSESSMENT

Health Assessment Draft Report

University of California, Merced – Public Health

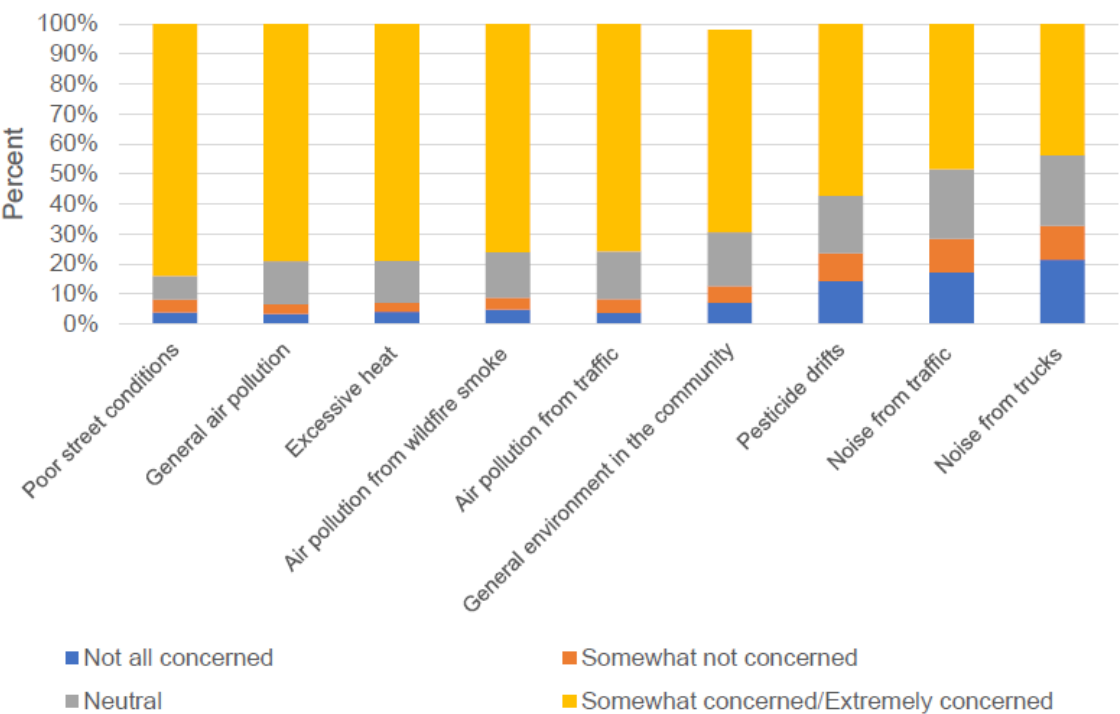
- **Pollution & Adverse Birth Outcomes**
- **Air Pollution & Asthma**
- **Air Pollution & Cardio-Cerebral Vascular Disease**
- **Community-Based Health Survey in South Fresno AB 617 Communities**



Health Assessment Draft Report

Feedback:

Residents' concerns about the environment in their community



Survey results:

- 1,766 surveys
- More than 40% of participants had one or more chronic conditions
- Many unable to rest because of air pollution & traffic or truck noise and experienced more health outcomes
- The majority wants policy action
- 84% support truck reroute to reduce pollution in their neighborhood

What's Next...

- Public Review Period – Spring 2024
- Community Meetings – in-person and virtual
- City Council Hearing – Summer 2024

A semi-truck with 'RL CARRIERS' branding is driving on a road. The truck has a white trailer with green and black stripes and the text 'RL CARRIERS' and 'www.rlc.com'. The trailer also has 'OF2267' and 'Liftgate service' written on it. In the background, there is a water tower and some trees. The entire image has a teal overlay.

Thank You!

<https://www.fresno.gov/publicworks/south-central-truck-re-route-study/>

A semi-truck with 'RL CARRIERS' branding is parked on a street. The truck is white with green and black stripes. The text 'RL CARRIERS' is prominently displayed on the side. Below it, 'www.rlc.com' and 'Available Liftgate Service' are visible. The truck's license plate is 'OF2267'. In the background, there is a water tower and some trees. The entire image has a teal overlay.

CIRCULATION AND TRAFFIC COMMENTS

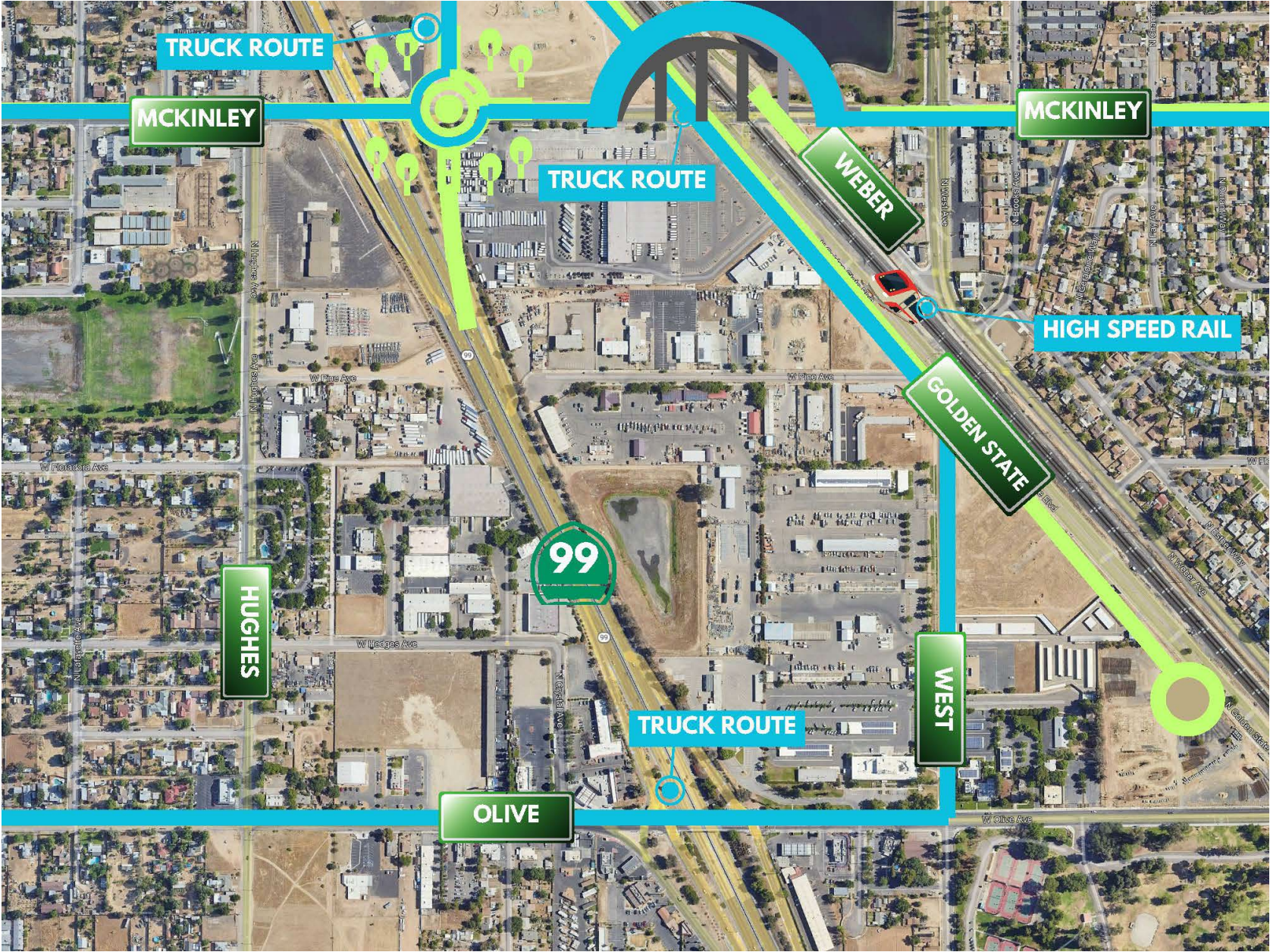
Belmont
Avenue
@HSR



Olive
Avenue
@HSR

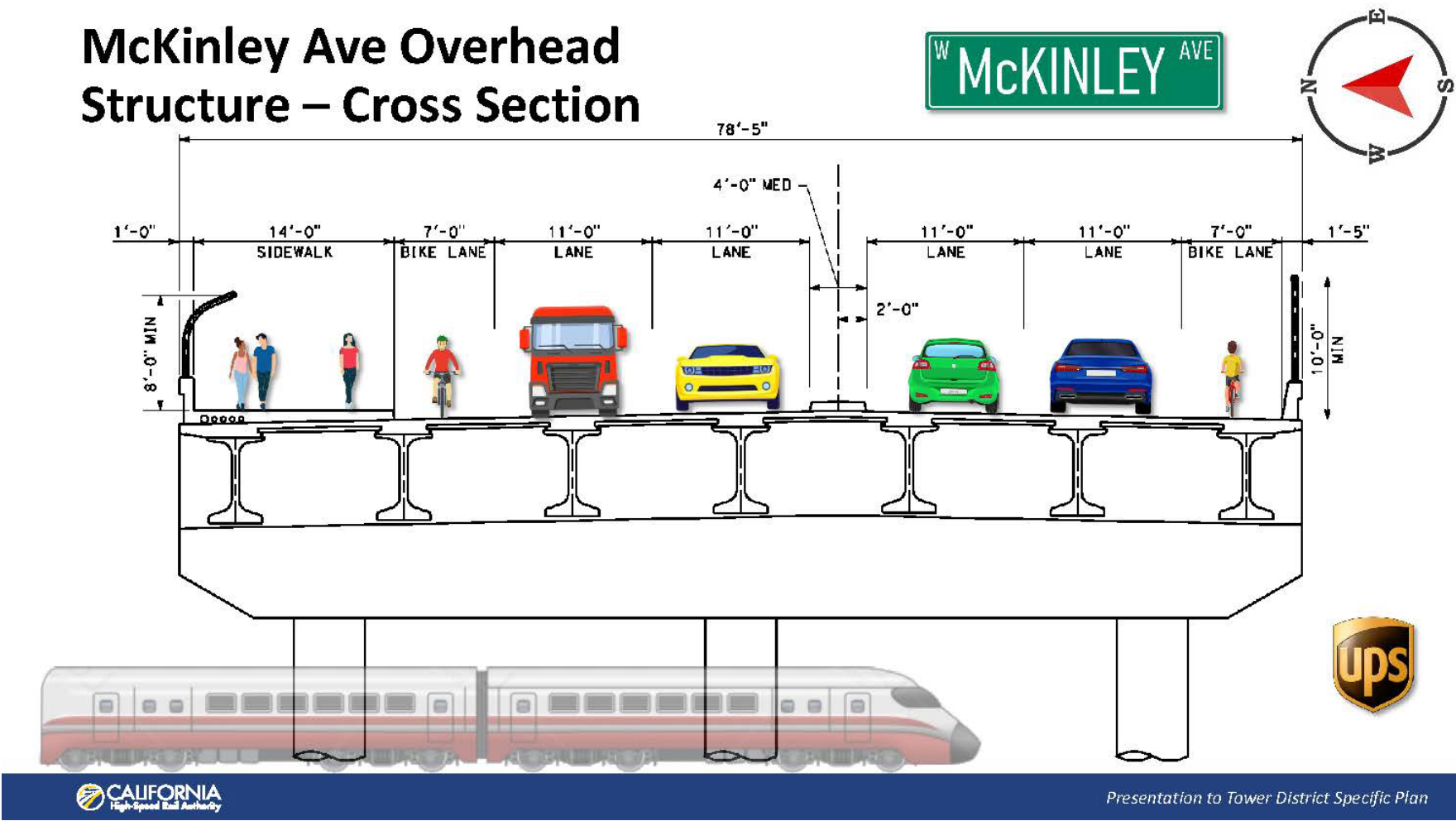


Hwy 99
and
HSR



McKinley
Avenue
Cross-Section

McKinley Ave Overhead
Structure – Cross Section



TRAFFIC STUDIES

- HSR Environmental - <https://hsr.ca.gov/programs/environmental-planning/>
- CALTRANS - <https://dot.ca.gov/caltrans-near-me/district-6/district-6-projects/06-0w800>



THANK YOU!