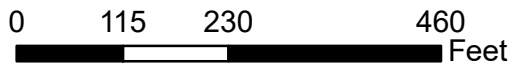
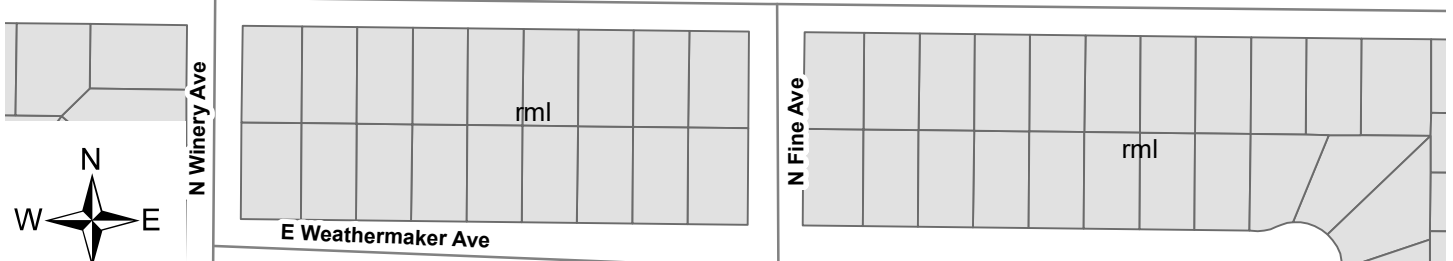
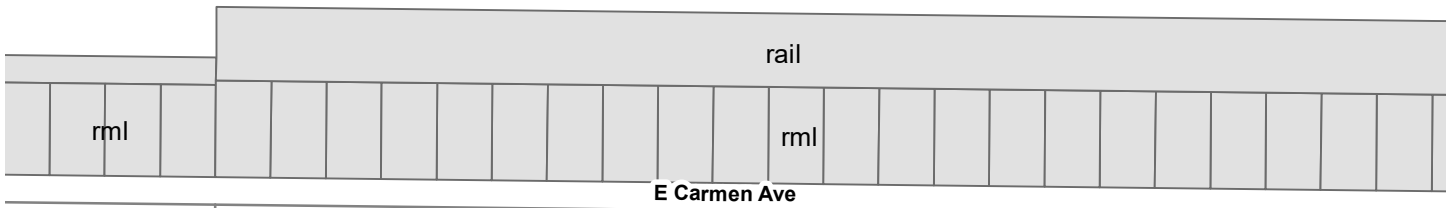


Exhibit C – Land Use Diagram

EXHIBIT A- Plan Amendment



P24-00589

APN(s):494-291-05 & 494-291-10

Northwest Corner of E. McKinley and N. Fine Ave.



Proposes to amend the planned land use designation of the subject properties from the Employment-Light Industrial (approximately 2.26 acres) to Commercial- Community (approximately 2.26 acres)