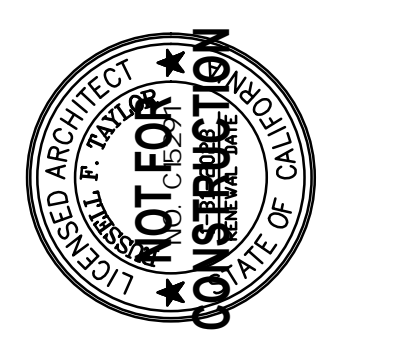


B NORTH ELEVATION (TULARE ST)

EXTERIOR FINISH SCHEDULE		MATERIAL MK. COLOR MK.
MARK	MATERIAL	DESCRIPTION
1	(N) STOREFRONT SYSTEM	-
2	(N) VINYL FRAME WINDOW SYSTEM	-
3	(E) WALL OPENINGS TO BE INFILLED	SEE DEMOLITION PLANS
4	(N) EXTERIOR STUCCO TO MATCH (E)	TEXTURE FINISH TO MATCH EXISTING
5	(E) EXTERIOR STUCCO	PREP FOR PAINTING
6	(E) BRICK VENEER	-
7	(E) METAL CANOPY FASCIA	CLEAN & REPAIR
8	(N) ROLL UP DOOR	-
9	(N) VINYL SLIDING DOOR SYSTEM	-
10	(N) DOOR & FRAME	SEE DOOR SCHEDULE
11	STEEL GUARDRAIL SYSTEM	-
12	(E) CONCRETE BEAM	-
13	(N) METAL ROOF OVER ATRIUM	-
14	(N) GALV. SHEET METAL CAP FLASHING	-

EXTERIOR ELEVATION

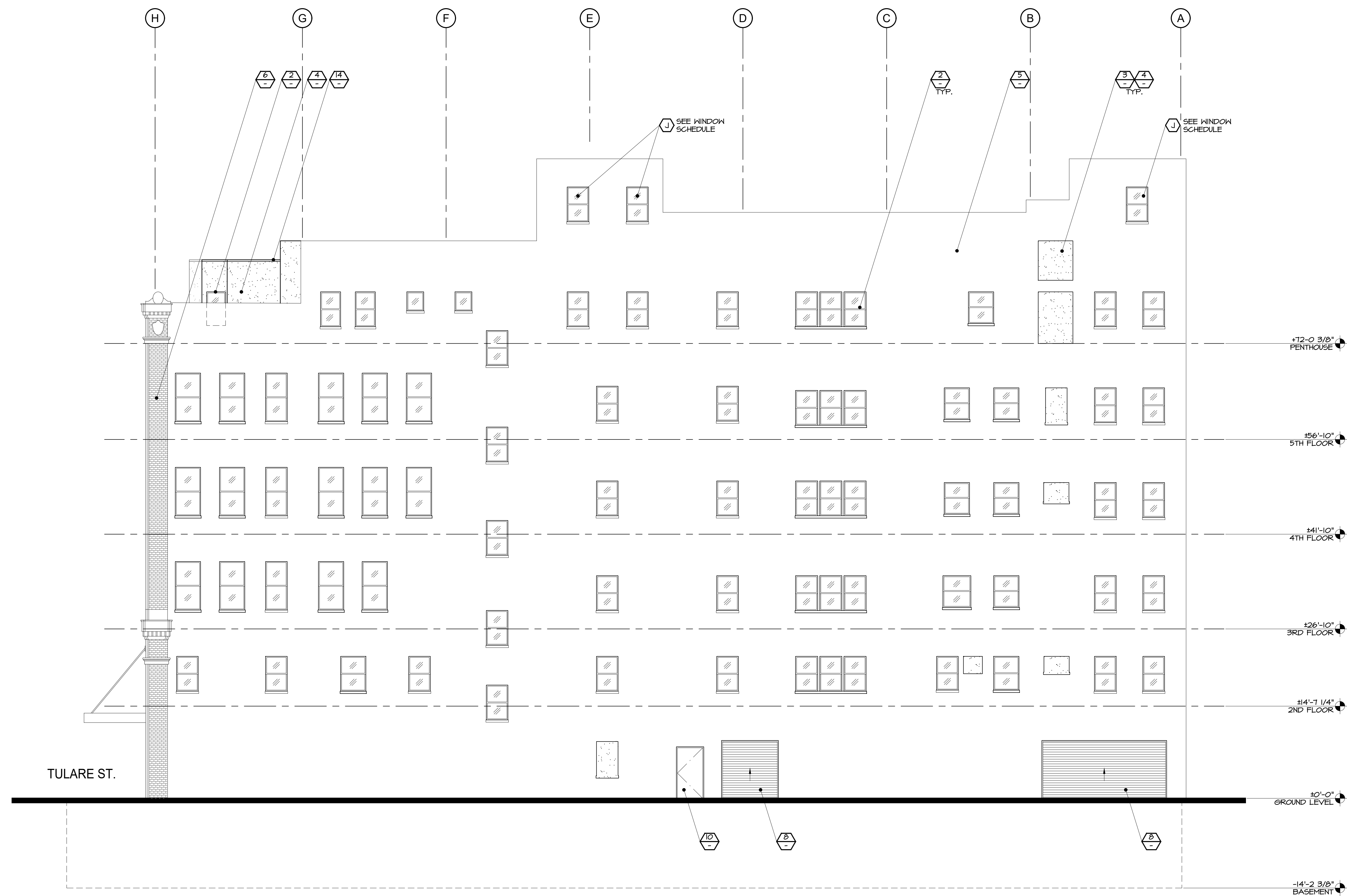
SCALE: 1/8" = 1'-0"



MARK	DATE	DESCRIPTION
-	11/15/2022	DEVELOPMENT PERMIT SUBMITTAL PACKAGE

PROPOSED MIXED-USE HOUSING AND RETAIL ADAPTIVE REUSE:
THE PENNY
 959 FULTON STREET
 FRESNO, CA 93721
 EXTERIOR ELEVATION

The Taylor Group expressly reserves its copyright in this drawing. No part of this drawing may be reproduced, stored in a retrieval system, or transmitted in any form or by any means, electronic, mechanical, photocopying, recording, or by any information storage and retrieval system, without the prior written consent of The Taylor Group.

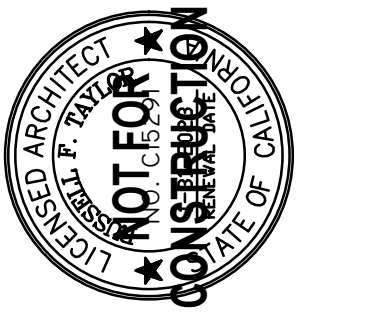


C WEST ELEVATION (HOMERUN ALLEY)

EXTERIOR FINISH SCHEDULE		
MARK	MATERIAL	DESCRIPTION
1	(N) STOREFRONT SYSTEM	-
2	(N) VINYL FRAME WINDOW SYSTEM	-
3	(E) WALL OPENINGS TO BE INFILLED	SEE DEMOLITION PLANS
4	(N) EXTERIOR STUCCO TO MATCH (E)	TEXTURE FINISH TO MATCH EXISTING
5	(E) EXTERIOR STUCCO	PREP FOR PAINTING
6	(E) BRICK VENEER	-
7	(E) METAL CANOPY FASCIA	CLEAN & REPAIR
8	(N) ROLL UP DOOR	-
9	(N) VINYL SLIDING DOOR SYSTEM	-
10	(N) DOOR & FRAME	SEE DOOR SCHEDULE
11	STEEL GUARDRAIL SYSTEM	-
12	(E) CONCRETE BEAM	-
13	(N) METAL ROOF OVER ATRIUM	-
14	(N) GALV. SHEET METAL GAP FLASHING	-

EXTERIOR ELEVATION

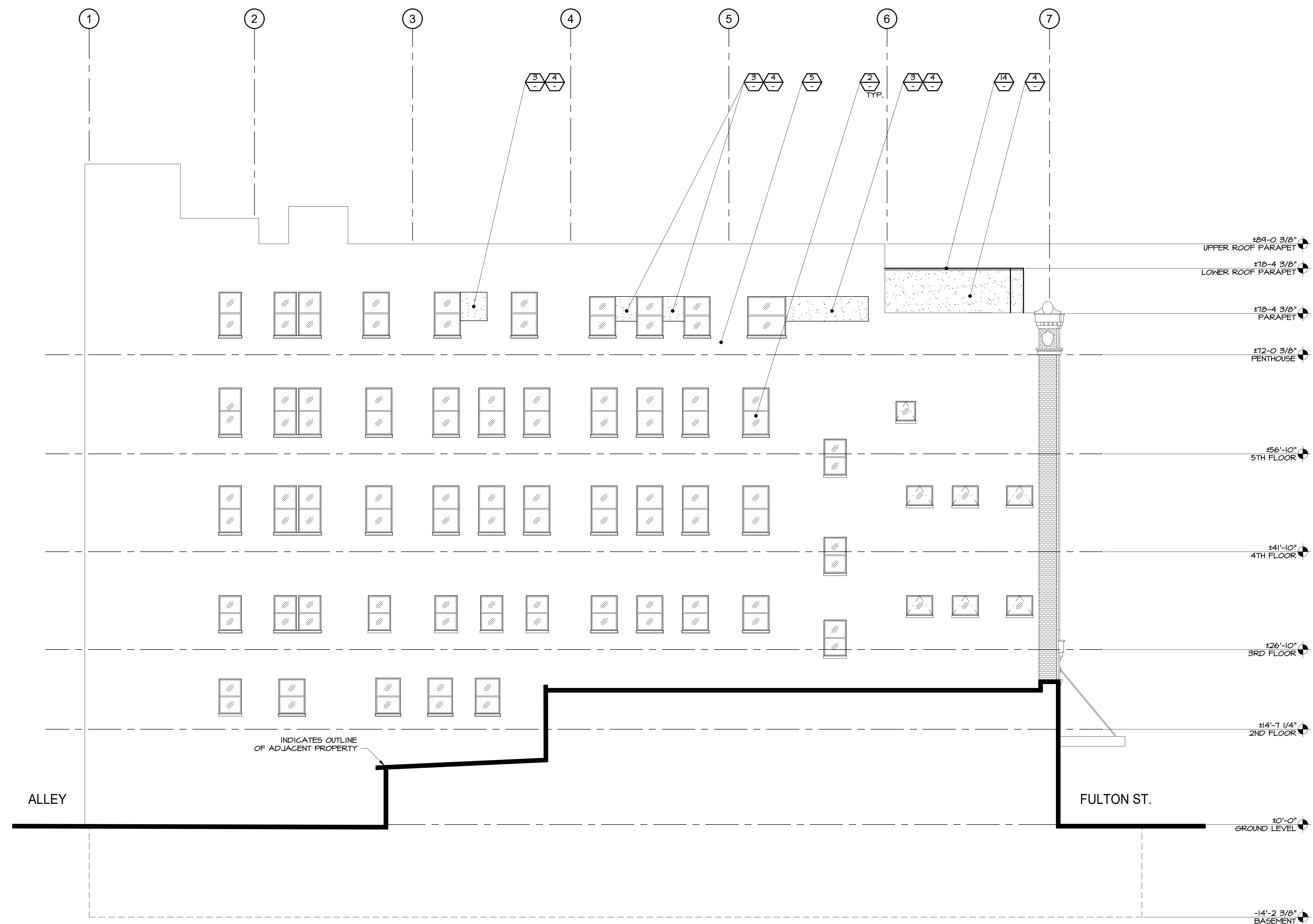
SCALE: 1/8" = 1'-0"



MARK	DATE	DESCRIPTION
-	11/15/2022	DEVELOPMENT PERMIT SUBMITTAL PACKAGE

PROPOSED MIXED-USE HOUSING AND RETAIL ADAPTIVE REUSE:
THE PENNY
 959 FULTON STREET
 FRESNO, CA 93721
 EXTERIOR ELEVATION

The Taylor Group expressly reserves the copyright in these drawings. No part of these drawings may be reproduced, stored in a retrieval system, or transmitted in any form or by any means, electronic, mechanical, photocopying, recording, or by any information storage and retrieval system, without the prior written consent of The Taylor Group.

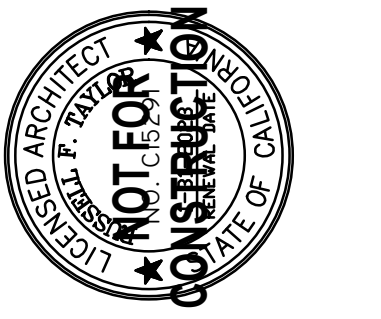


D SOUTH ELEVATION

EXTERIOR FINISH SCHEDULE		
MARK	MATERIAL	DESCRIPTION
1	(N) STOREFRONT SYSTEM	-
2	(N) VINYL FRAME WINDOW SYSTEM	-
3	(E) WALL OPENINGS TO BE INFILLED	SEE DEMOLITION PLANS
4	(N) EXTERIOR STUCCO TO MATCH (E)	TEXTURE FINISH TO MATCH EXISTING
5	(E) EXTERIOR STUCCO	PREP FOR PAINTING
6	(E) BRICK VENEER	-
7	(E) METAL CANOPY FASCIA	CLEAN & REPAIR
8	(N) ROLL UP DOOR	-
9	(N) VINYL SLIDING DOOR SYSTEM	-
10	(N) DOOR & FRAME	SEE DOOR SCHEDULE
11	STEEL GUARDRAIL SYSTEM	-
12	(E) CONCRETE BEAM	-
13	(N) METAL ROOF OVER ATRIUM	-
14	(N) GALV. SHEET METAL GAP FLASHING	-

EXTERIOR ELEVATION

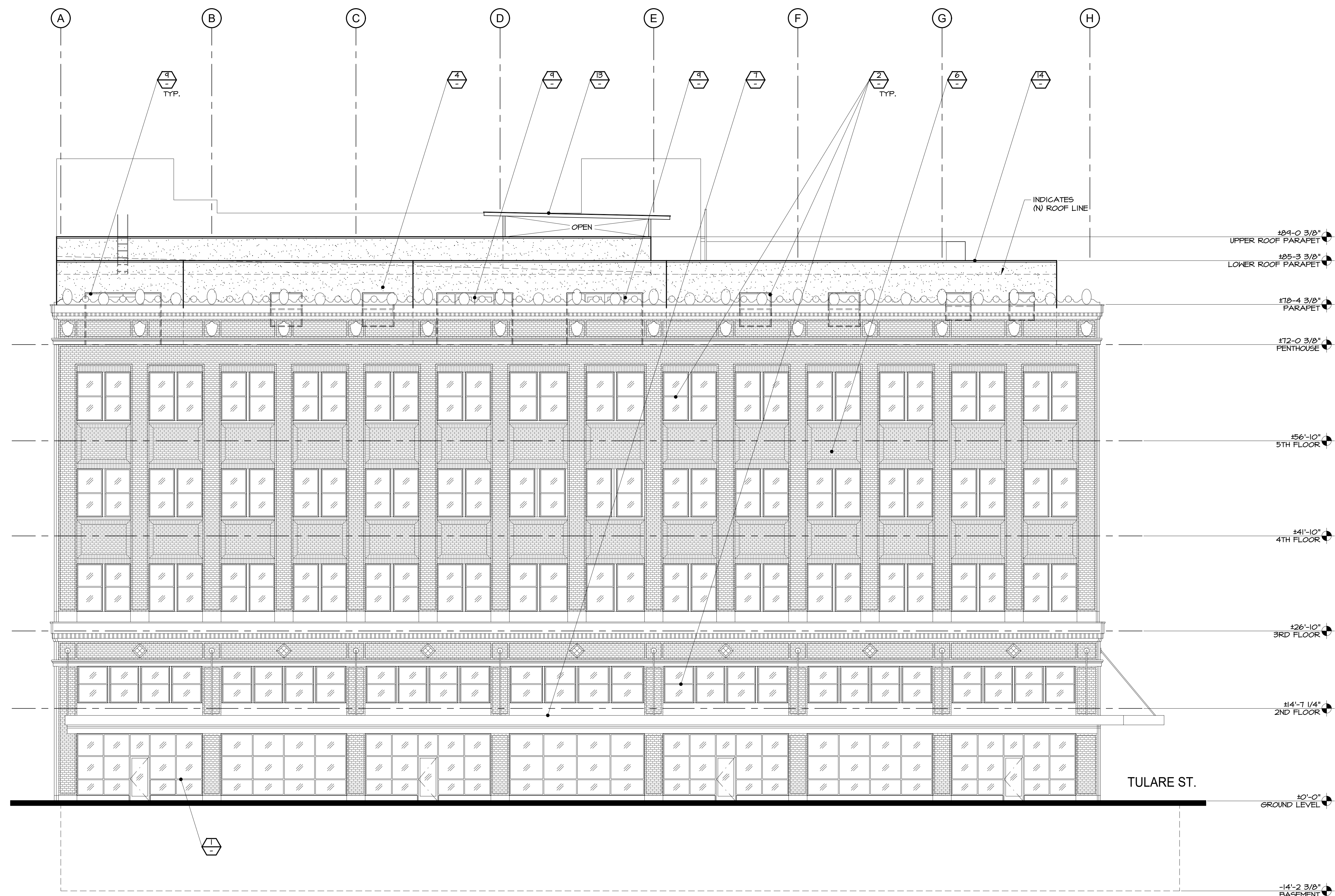
SCALE: 1/8" = 1'-0"



MARK	DATE	DESCRIPTION
-	11/15/2022	DEVELOPMENT PERMIT SUBMITTAL PACKAGE

PROPOSED MIXED-USE HOUSING AND RETAIL ADAPTIVE REUSE:
THE PENNY
 959 FULTON STREET
 FRESNO, CA 93721
 EXTERIOR ELEVATION

The Taylor Group expressly reserves the copyright to this drawing. No part of this drawing may be reproduced, stored in a retrieval system, or transmitted in any form or by any means, electronic, mechanical, photocopying, recording, or by any information storage and retrieval system, without the prior written consent of The Taylor Group.

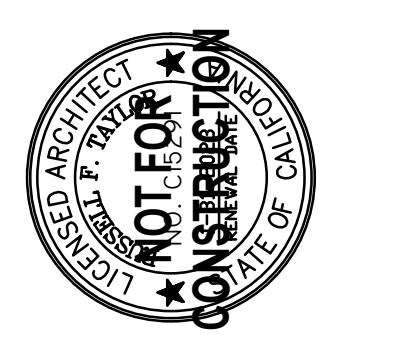


A EAST ELEVATION (FULTON ST.)

EXTERIOR FINISH SCHEDULE		MATERIAL MK. COLOR MK.
MARK	MATERIAL	DESCRIPTION
1	(N) STOREFRONT SYSTEM	-
2	(N) VINYL FRAME WINDOW SYSTEM	-
3	(E) WALL OPENING TO BE INFILLED	SEE DEMOLITION PLANS
4	(N) EXTERIOR STUCCO TO MATCH (E)	TEXTURE FINISH TO MATCH EXISTING
5	(E) EXTERIOR STUCCO	PREP FOR PAINTING
6	(E) BRICK VENEER	-
7	(E) METAL CANOPY FASCIA	CLEAN & REPAIR
8	(N) ROLL UP DOOR	-
9	(N) VINYL SLIDING DOOR SYSTEM	-
10	(N) DOOR & FRAME	SEE DOOR SCHEDULE
11	STEEL GUARDRAIL SYSTEM	-
12	(E) CONCRETE BEAM	-
13	(N) METAL ROOF OVER ATRIUM	-
14	(N) GALV. SHEET METAL CAP FLASHING	-

EXTERIOR ELEVATION

SCALE: 1/8" = 1'-0"



MARK	DATE	DESCRIPTION
-	11/15/2022	DEVELOPMENT PERMIT SUBMITTAL PACKAGE

PROPOSED MIXED-USE HOUSING AND RETAIL ADAPTIVE REUSE:
THE PENNY
 959 FULTON STREET
 FRESNO, CA 93721
 EXTERIOR ELEVATION

The Taylor Group expressly reserves the copyright to these drawings. All rights in these drawings are reserved. No part of these drawings may be reproduced, stored in a retrieval system, or transmitted in any form or by any means, electronic, mechanical, photocopying, recording, or by any information storage and retrieval system, without the prior written permission of The Taylor Group.